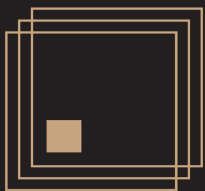


ENDLESS LUXURY

TILE PRODUCT GUIDE

An extensive range of high-quality ceramic and porcelain tiles, hand-picked to provide our trade customers with an industry leading selection of wall and floor tiles.



NAVARRO TILES

ENDLESS LUXURY

PRODUCT RANGE

Our range of ceramic and porcelain tiles is handpicked to offer distinctive natural finishes combined with a depth of colour that transforms any space.

Our passion and expertise enable us to help you select the ideal ranges for your showroom, so your customers can find exactly what they are looking for.

CONTENTS

*	4	MARKETING SUPPORT
*	6	PORCELAIN TILES
*	8	ASHCROFT
*	10	QUADROPHENIA
*	12	CHATEAU
*	14	WELLER
*	16	WELLER MOSAIC
*	18	IMAGINE
*	20	WATERFALL
*	22	HAZELL
*	24	MOONSTONE
*	26	SONNET
*	28	DALTREY
*	30	VESPA CARRARA
*	32	CERAMIC TILES
*	34	LENNON
*	36	ABBAY ROAD
*	38	CONNEMARA
*	40	CAVERN
*	42	LYLA
*	44	PENNY LANE
*	46	LANDMADE
*	48	VERVE
*	50	DAKOTA
*	52	WATERLOO SUNSET
*	54	MOTOWN
*	56	WELLER WHITE BODY
*	58	DELIVERY INFORMATION
*	59	USEFUL INFORMATION

NAVARRO TILES

We are a leading supplier of high-quality porcelain and ceramic tiles for residential, commercial and architectural projects. Founded in 2020, the team behind Navarro Tiles has many years of industry experience and a passion for sourcing unique tiles with a natural finish.

As a result, our range is quickly becoming a source of inspiration for designers across the UK and Ireland. As an experienced team of industry professionals, we are ideally positioned to offer a full range of tiles, which are perfect for all types of residential, commercial and hospitality projects. We have partnered with some of the best tile manufacturers in Europe, to give our clients cutting edge designs at great prices.

Our customers are important to us – we strive to offer the best products available combined with expert advice and we are extremely proud of the range we offer. Our range of tiles is available on a trade only basis throughout the UK and Ireland.

If you are interested in stocking our tiles or would like to find your nearest supplier, please contact our team.



MARKETING SUPPORT

ENDLESS LUXURY

OUR TEAM ARE COMMITTED
TO HELPING YOU SHOWCASE
OUR TILING RANGES, FROM
POINT OF SALE DISPLAY
SOLUTIONS TO BROCHURES
AND MARKETING MATERIAL,
WE ARE HERE TO HELP.


Our goal is to provide you with the marketing support you need, so that Navarro Tiles becomes a thriving part of your business.

We are committed to helping your business succeed, which means alongside our innovative tile ranges we also provide extensive marketing support. Whether you are looking for a modern point of sale display solution or tile samples to provide customers, our team will ensure you have everything you need to showcase our range.

If there is specific marketing support that your business requires, please let our team know and we will always do our best to accommodate your requests. For more information about our trade marketing solutions, please contact your local area representative.

We can offer your business:

- Marketing materials
- Tile display boards
- Full sized tile samples
- Digital media support



**HIGH-QUALITY
PORCELAIN TILES,
CHOSEN FOR THEIR
STYLE AND DURABILITY
FROM LEADING EUROPEAN
MANUFACTURERS**

PORCELAIN TILES



HARD-WEARING TILES

Our porcelain tile range is always a popular option, with showrooms, tilers and customers alike. Porcelain tiles are proving to be an excellent addition to any tile range, with customers benefitting from their hard-wearing design, style options, sizes and finishes.

The manufacturing process of porcelain tiles involves immense pressure, which results in an incredibly hard, dense, smooth and fine grained tile. This extreme durability makes them ideal for use in high-traffic areas, where surfaces need to be extremely hard-wearing.

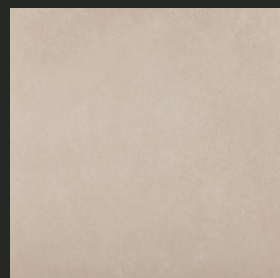
The denseness of porcelain tiles enables them to be used as large format tiles, as they are less likely to chip. This means within our range we have a variety of porcelain tile sizes available.

ASHCROFT

GLAZED PORCELAIN

MEASUREMENTS: 608 X 608MM / 24 X 24"

QUANTITY PER SQUARE METRE: 2.7



MARFIL



PERLA



NATURAL



MARENGO



ASHCROFT

The Ashcroft range of porcelain floor tiles include four colour options, with a variety of warm and cool matt tones. The stone effect tiles benefit from a slight variation, which will create a natural, low-maintenance finish.

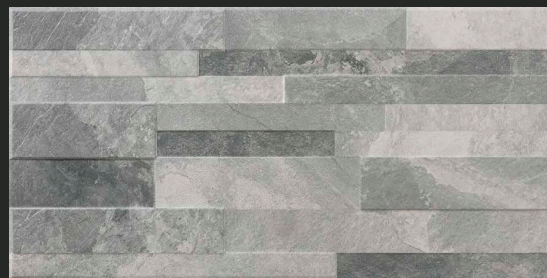
- Floor tiles
- Matt finish
- Slight variation
- Porcelain

QUADROPHENIA

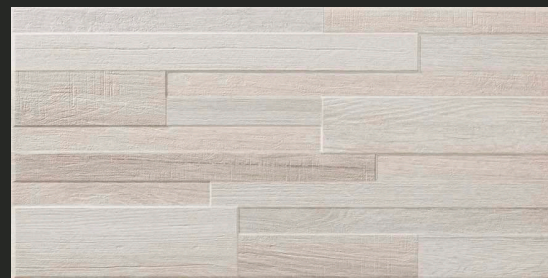
PORCELAIN WALL TILES

MEASUREMENTS: 303 X 613MM / 12 X 24"

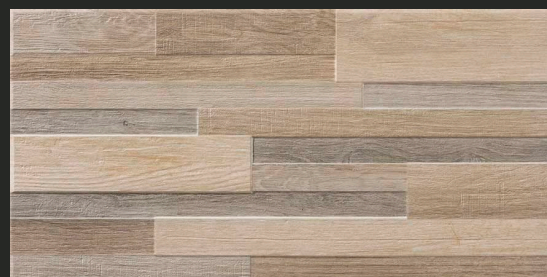
QUANTITY PER SQUARE METRE: 5.38



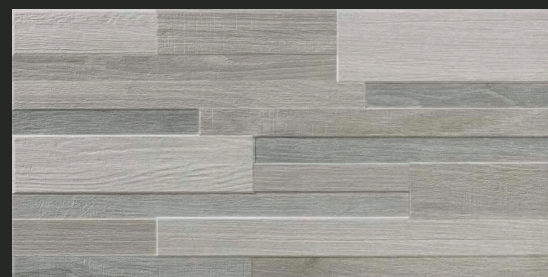
GREY



ICE



SAND



GREIGE



QUADROPHENIA

Inspired by geology these porcelain wall tiles feature textured layers to create a natural rock effect, with both warm and cool tones available. The natural detail within these tiles is enhanced by the matt finish, resulting in a unique yet soothing finish.

- Wall tiles
- Matt finish
- Porcelain

CHATEAU

WOOD-LOOK PORCELAIN

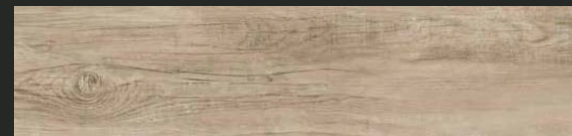
ASH & OAK: 250 X 1000MM / 9.8 X 39.3"

GRIS, ROBLE, WENGUE & HAYA: 230 X 1200MM / 9.05 X 47.2"

QUANTITY PER SQUARE METRE: 4



ASH



OAK



GRIS



ROBLE



WENGUE



HAYA



CHATEAU

Our Chateau range of wood effect porcelain tiles are perfect for recreating the look of a natural wood floor. The tiles have a matt finish with slight variations designed to ensure the tiles subtly mimic grains of wood, with a variety of natural wood tones available.

- Floor tiles
- Matt finish
- Varied
- Porcelain

WELLER

PORCELAIN TILES

MEASUREMENTS: 300 X 600MM / 12 X 24" / QTY SQ.M 5.55

600 X 600MM / 24 X 24" / QTY SQ.M 2.78

1200 X 600MM / 48 X 24" / QTY SQ.M 1.39

300 X 600MM



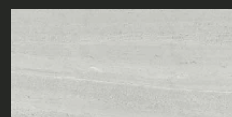
BLANCO



GRIS

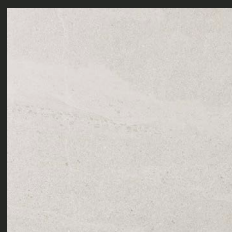


MARFIL



PERLA

600 X 600MM



BLANCO



GRIS



MARFIL



PERLA

1200 X 600MM



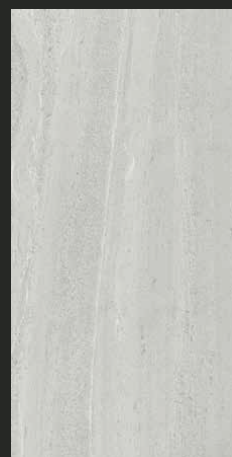
BLANCO



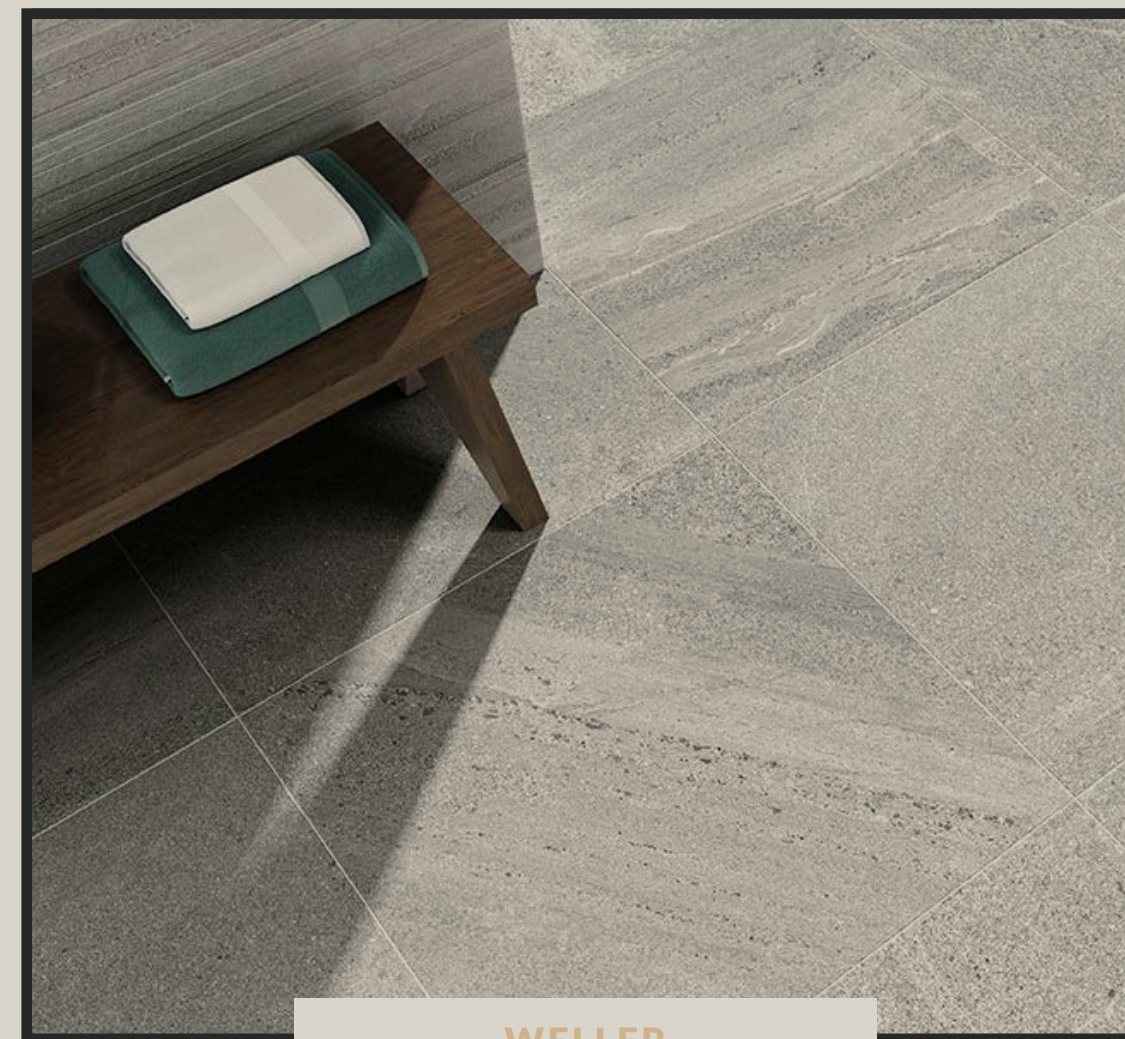
GRIS



MARFIL



PERLA



WELLER

The Weller range of porceain tiles are designed for use on walls and floors, with a range of subtle colours chosen for their timeless look. These rectified tiles have a matt finish and are available in a square or rectangular shape, whilst the porcelain provides a durable yet classic finish.

- Wall and floor tiles
- Matt finish
- Rectified

WELLER MOSAIC

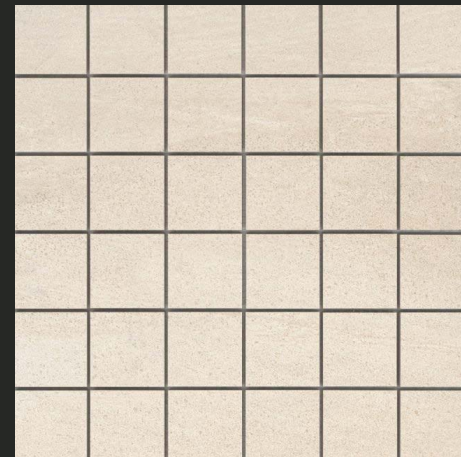
WALL AND FLOOR TILES

MEASUREMENTS: 300 X 300MM OR 50 X 50MM / 11.8 X 11.8" OR 1.9 X 1.9"

QUANTITY PER SQUARE METRE: 11.1 OR 400



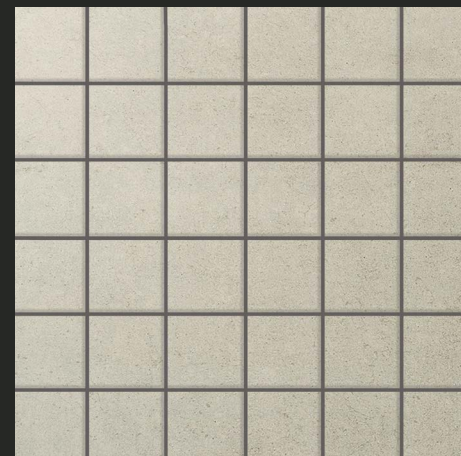
MOSAIC GRIS



MOSAIC BLANCO



MOSAIC MARFIL



MOSAIC PERLA



WELLER MOSAIC

A range of elegant mosaic wall and floor tiles, available in a variety of natural tones for both traditional and contemporary projects. The matt finish of these tiles enhances the muted tones of these tiles to create a versatile range which can be used alone or as part of a focal feature.

- Wall and floor tiles
- Rectified
- Matt finish
- Porcelain
- White body

IMAGINE

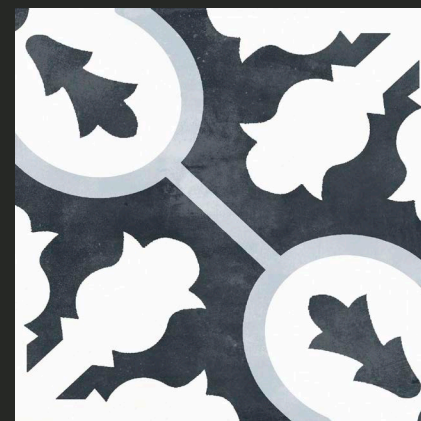
PORCELAIN PATTERNED TILES

MEASUREMENTS: 223 X 223MM / 8.6 X 8.6"

QUANTITY PER SQUARE METRE: 20



BLANCO



NEGRO



HYDRA NEGRO



IMAGINE

The Imagine range of porcelain tiles can be used on both walls and floors to create a unique finish. These stylish decorative tiles are available in a selection of monochrome matt finishes and can be combined to create a stunning pattern. The combination of chalky white and muted black tones will add character to kitchens, bathrooms, back-splashes and other focal areas.

- Wall and floor tiles
- Matt finish
- Porcelain

WATERFALL

PORCELAIN FLOOR TILES

MEASUREMENTS: 608 X 608MM / 23.9 X 23.9"

QUANTITY PER SQUARE METRE: 2.7



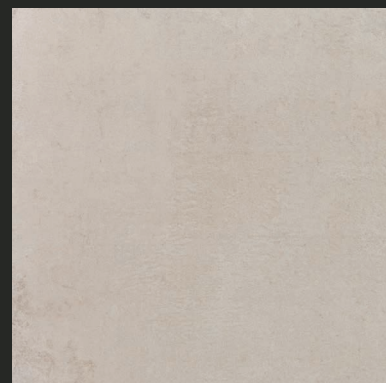
SILVER



MARFIL



PERLA



TAUPE



WATERFALL

These white bodied porcelain tiles offer a matt finish, which is perfect for creating a timeless, natural design. The elegant colours are understated yet modern, so can be easily coordinated with almost any room design.

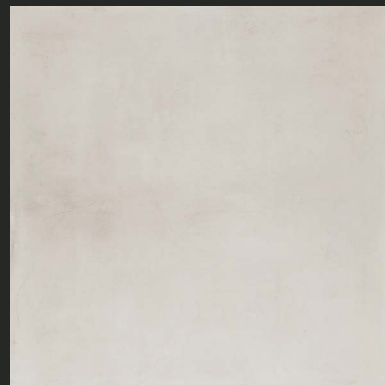
- Floor tiles
- Matt finish
- Porcelain

HAZELL

GLAZED PORCELAIN

MEASUREMENTS: 608 X 608MM / 23.9 X 23.9"

QUANTITY PER SQUARE METRE: 2.7



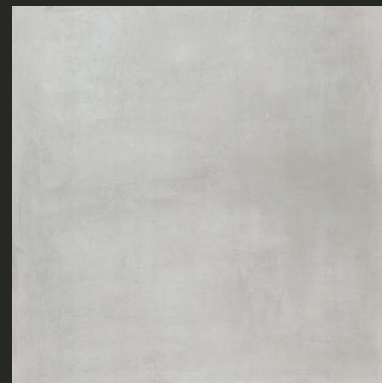
MARFIL



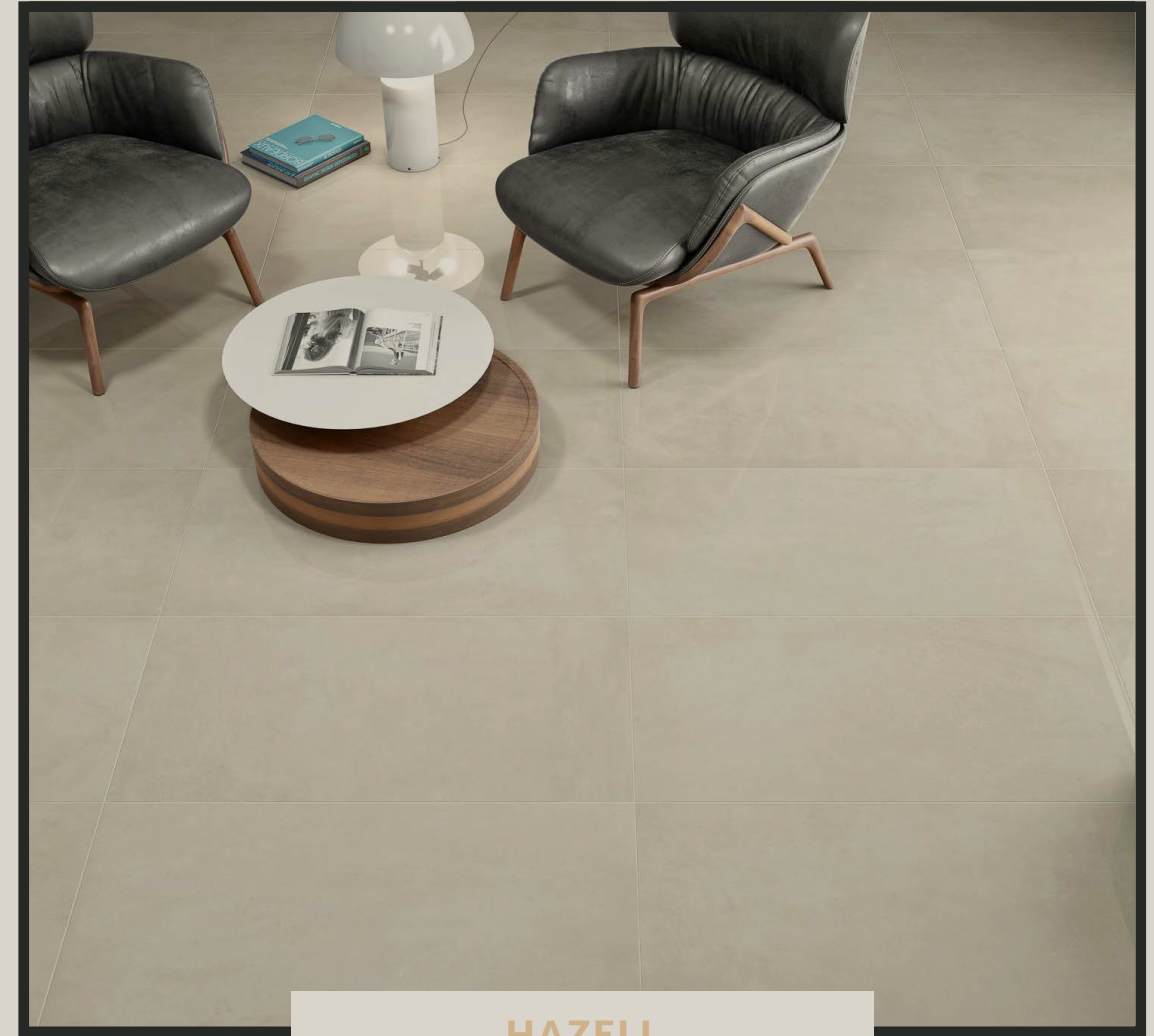
TAUPE



PERLA



GRIS



HAZELL

The Hazell range of porcelain floor tiles feature a gloss finish and are designed to create a stylish and sleek space, without compromising on practicality. These tiles are manufactured from porcelain which is much more durable than ceramic, thanks to the higher firing temperatures. The manufacturing process also means these tiles are less prone to stain and moisture absorption.

- Floor tiles
- Gloss finish
- Porcelain

MOONSTONE

PORCELAIN TILES

MEASUREMENTS: 600 X 600MM / 24 X 24" AND 600 X 1200MM / 24 X 48"

QUANTITY PER SQUARE METRE: 1.39 OR 2.78



STONE



PERLA



GRAPHITE



WHITE



STONE



PERLA



GRAPHITE



WHITE



MOONSTONE

The Moonstone porcelain tiles offer a gloss finish, which is perfect for creating a modern finish to any floor or tiled wall design. The elegant colours and variety of sizes available can be configured to suit various layouts and room styles.

- Floor and wall tiles
- Gloss finish
- Porcelain
- Rectified

SONNET

PATTERNED PORCELAIN

MEASUREMENTS: 450 X 450MM / 18 X 18"

QUANTITY PER SQUARE METRE: 4.9



MARFIL



PERLA



SONNET

A range of patterned porcelain floor tiles, available in two possible neutral options, marfil and perla. The matt finish combined with the decorative design creates a versatile range of tiles which can be used on their own or co-ordinated with plain styles for use as a focal point.

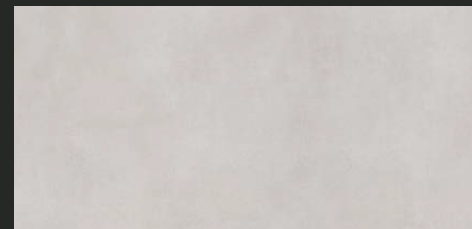
- Floor tiles
- Matt finish
- Porcelain

DALTREY

STONE EFFECT TILES

MEASUREMENTS: 303 X 613MM / 12 X 24"

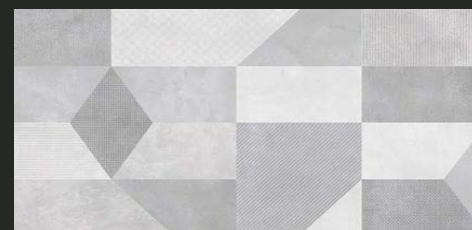
QUANTITY PER SQUARE METRE: 5.38



WHITE



GREY



COLD DECOR



DALTREY

The Daltrey range of porcelain tiles provide a natural stone finish with its calming tones and interesting texture. The range includes white, grey and decorative tiles which offer a modern yet understated finish. When combined with the matt finish, these tiles are a great choice for those looking to create a premium tiled area.

- Matt finish
- Porcelain

VESPA CARRARA

MARBLE EFFECT TILES

MEASUREMENTS:

608 X 608MM / 23.9 X 23.9"

QUANTITY PER SQUARE METRE: 2.7

AND

250 X 700 MM / 9.8 X 27.5"

QUANTITY PER SQUARE METRE: 5.7

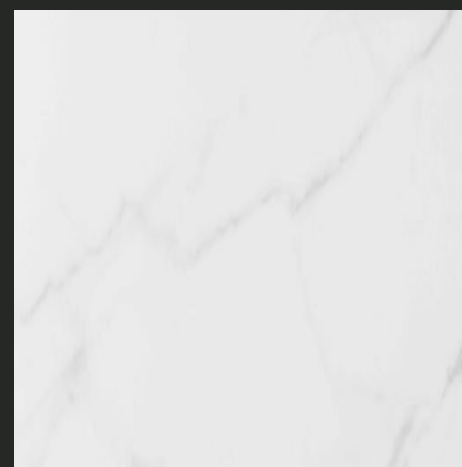


VESPA CARRARA

These gloss porcelain tiles are the ideal choice for creating a realistic marble effect, thanks to the slight variation within the tiles.

With both standard white and textured decorative options available, it is possible to create a stunning focal feature.

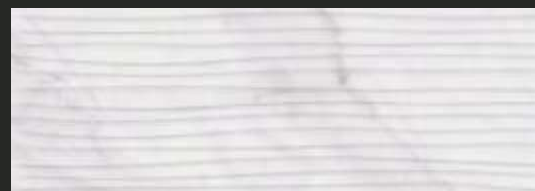
- Porcelain
- Gloss
- Slight variation



GREY



BLUE



BLUE



**A HAND-PICKED
SELECTION OF
HIGH-QUALITY CERAMIC
TILES, IDEAL FOR
COMMERCIAL AND
RESIDENTIAL PROJECTS.**

CERAMIC TILES



HIGH-QUALITY TILES

Our ceramic tile range is designed to provide a wide variety of popular finishes, sizes and designs for both commercial and residential use. From plain matt finish tiles and large format gloss tiles to decorative patterned tiles, our ranges are hand-picked to suit every trend and interior style.

Our aim is to source the latest tile styles from across Europe, so that you benefit from exclusive access to modern and innovative designs which ensure your business stands out from the competition.

The ceramic tiles we offer have proven themselves to be popular with choices with both tilers and interior designers alike, so you can be sure that our ranges will appeal to your retail market.

LENNON

RED BODY WALL TILES

MEASUREMENTS: 330 X 550MM / 13 X 21.6"

QUANTITY PER SQUARE METRE: 5.5



GRIS PLAIN



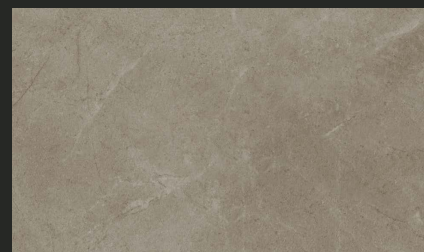
GRIS DECOR



MARENGO PLAIN



MARENGO DECOR



NATURAL PLAIN



NATURAL DECOR



LENNON

The Lennon range of ceramic wall tiles are available in a selection of warm tones, with both plain and linear decorative patterns available. These red bodied tiles offer a matt finish and offer a versatile finish for a variety of interior styles.

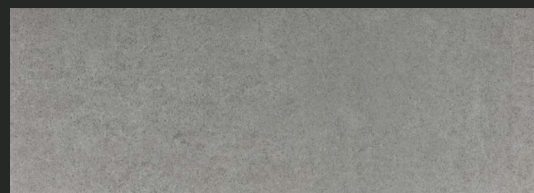
- Wall tiles
- Red body
- Matt finish
- Ceramic

ABBHEY ROAD

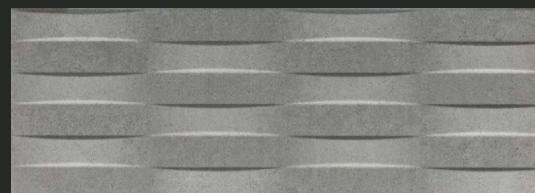
CERAMIC WALL TILES

MEASUREMENTS: 250 X 700MM / 9.8 X 27.5"

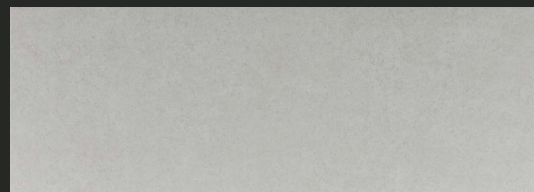
QUANTITY PER SQUARE METRE: 5.7



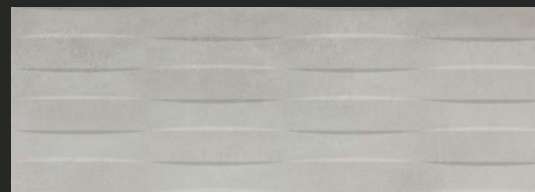
GRIS PLAIN



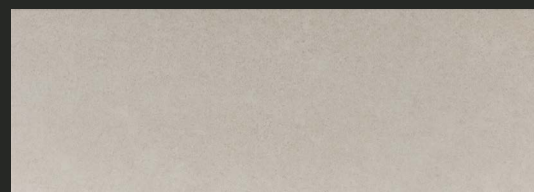
GRIS DECOR



PERLA PLAIN



PERLA DECOR



NATURAL PLAIN



NATURAL DECOR



ABBHEY ROAD

The stylish Abbey Road range of stone effect wall tiles are ideal for showers, bathrooms and kitchens. The ceramic, red bodied tiles benefit from a matt finish for a natural look and are available in a range of plain and decorative finishes. These subtle tiles with a linear decorative design are perfect for creating a focal point or zoned area within a room.

- Wall tiles
- Red body
- Matt finish
- Ceramic

CONNEMARA

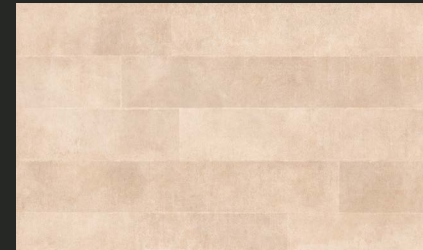
RED BODY CERAMIC TILES

MEASUREMENTS: 330 X 550MM / 13 X 21.6"

QUANTITY PER SQUARE METRE: 5.5



CREMA



CREMA DECOR



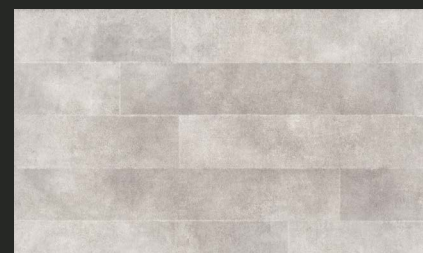
ANTRACITA



ANTRACITA DECOR



GRIS



GRIS DECOR



CONNEMARA

Our Connemara range of matt wall tiles are designed to offer a weathered finish, which will create a distinctive yet natural feel. The ceramic tiles feature a red body and are available in cream and various shades of grey, with co-ordinating decorative tiles also available.

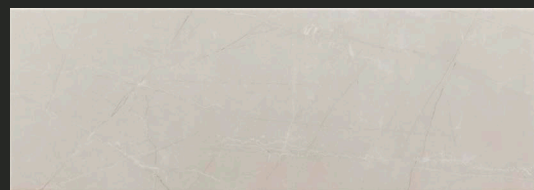
- Wall tiles
- Red body
- Matt finish
- Ceramic

CAVERN

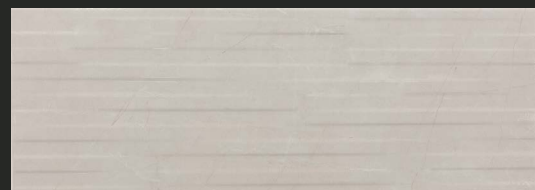
CERAMIC WALL TILES

MEASUREMENTS: 250 X 700MM / 9.8 X 27.5"

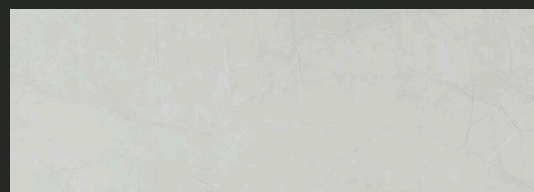
QUANTITY PER SQUARE METRE: 5.7



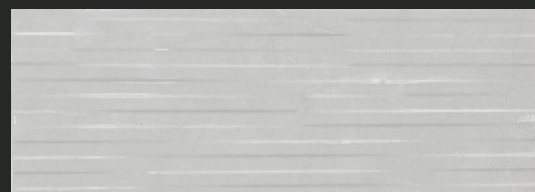
CREMA PLAIN



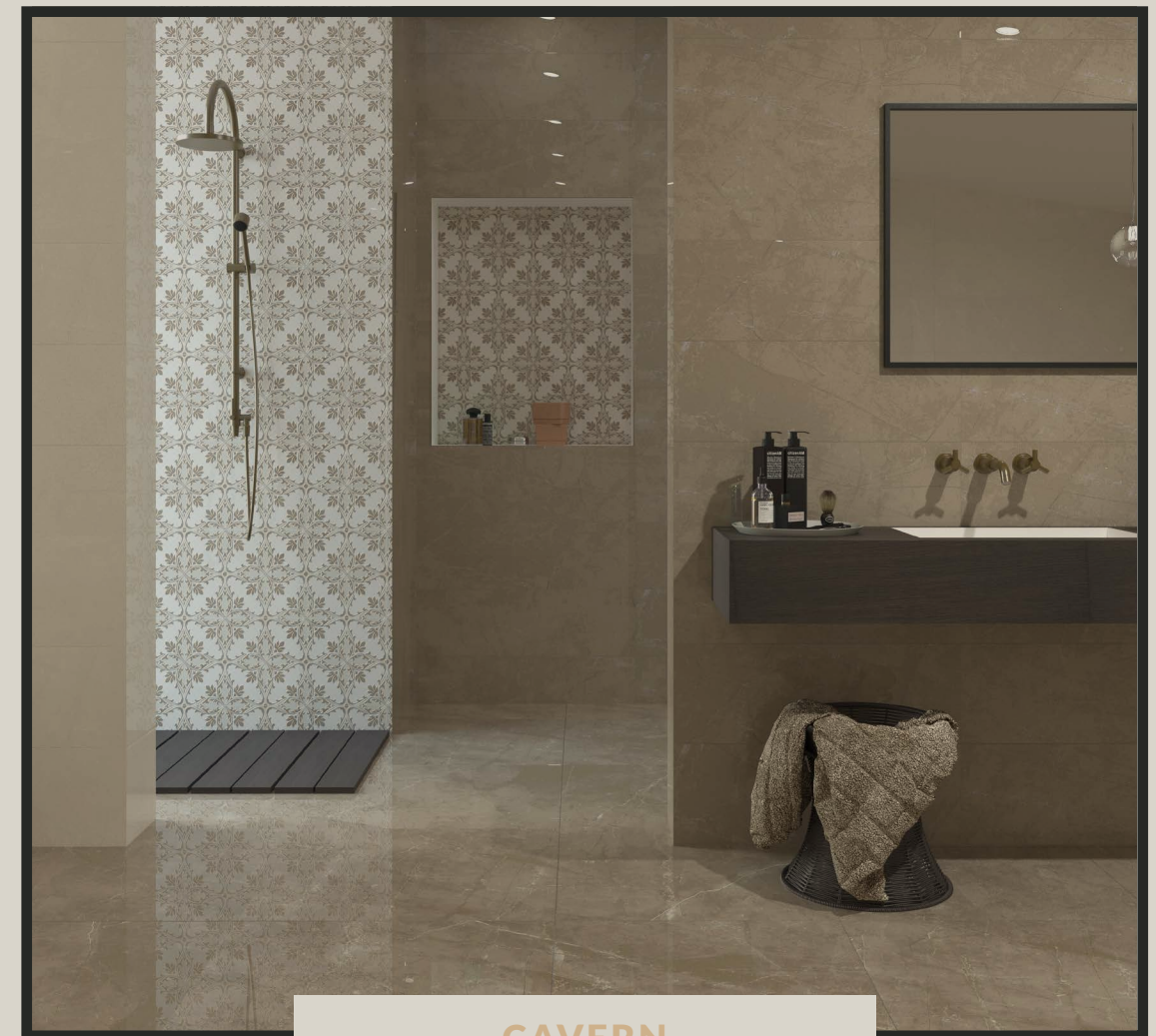
CREMA DECOR



PERLA PLAIN



PERLA DECOR



CAVERN

These elegant ceramic wall tiles feature a high gloss finish combined with muted tones, which are perfect for creating an understated yet modern finish. These red bodied tiles are both contemporary yet traditional, with a luxurious gloss surface which reflects light to enhance any space.

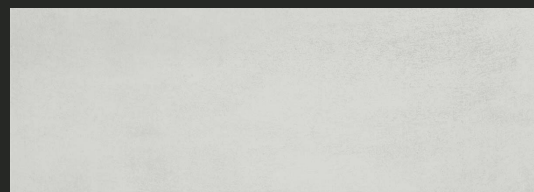
- Wall tiles
- Red body
- Gloss finish
- Ceramic

LYLA

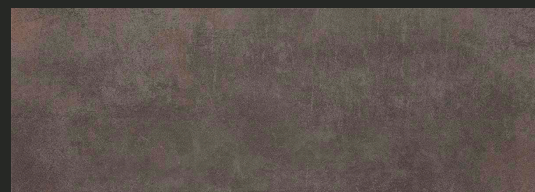
RED BODY WALL TILES

MEASUREMENTS: 250 X 700MM / 10 X 27.3"

QUANTITY PER SQUARE METRE: 5.7



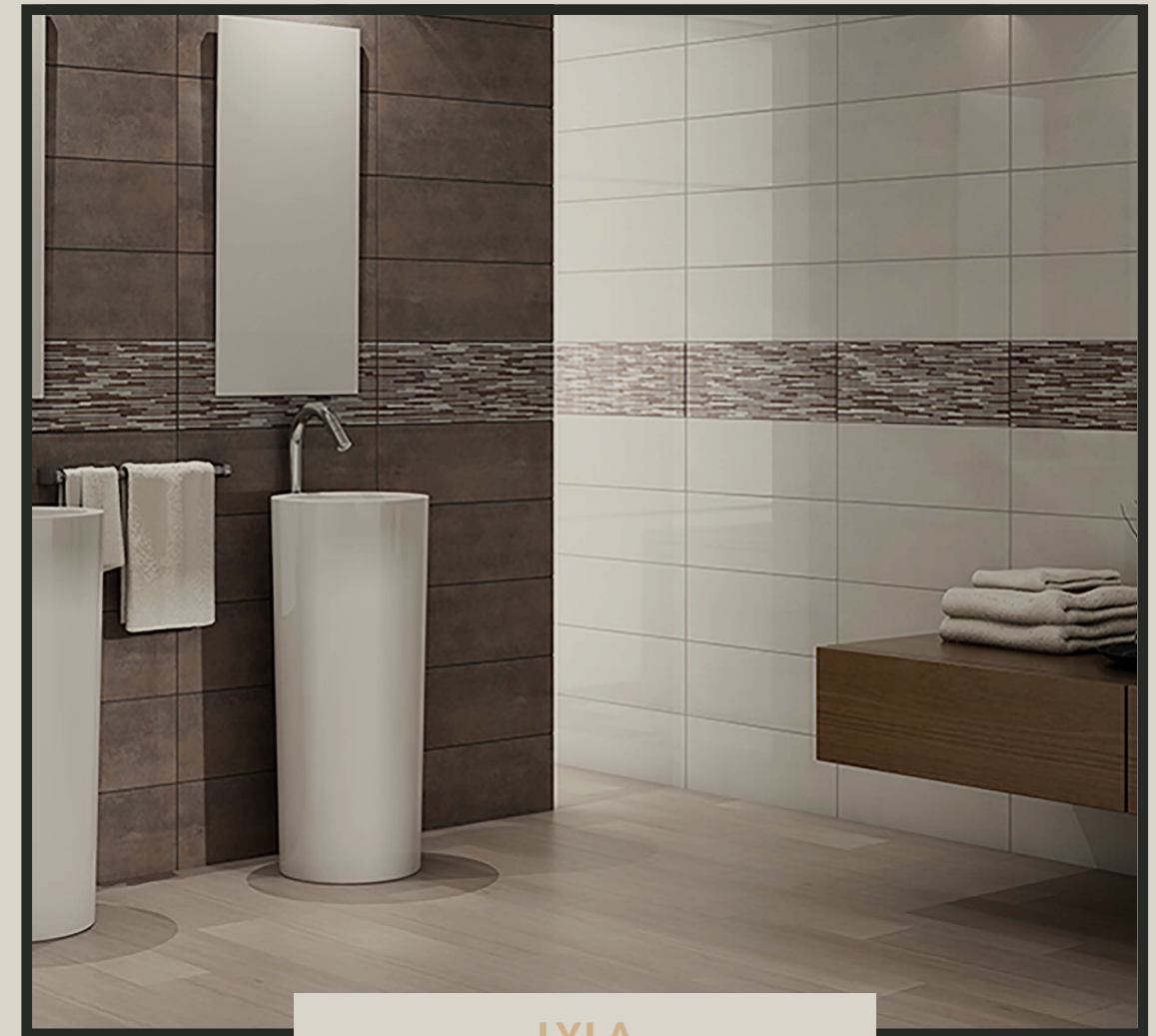
PERLA PLAIN



GRAFITO PLAIN



DECOR



LYLA

The Lyla range of red bodied ceramic wall tiles feature a stylish high gloss finish, which is ideal for creating an elegant finish. The decorative lined finish combined with the elegant plain tiles will create a luxury hotel feel, with a versatile pallet of colours available to create a timeless finish.

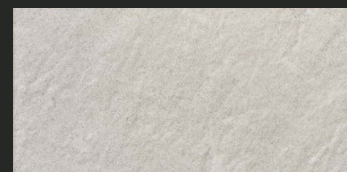
- Wall tiles
- Red body
- Gloss finish
- Ceramic

PENNY LANE

RED BODY WALL TILES

MEASUREMENTS: 316 X 600MM / 12 X 24"

QUANTITY PER SQUARE METRE: 5.26



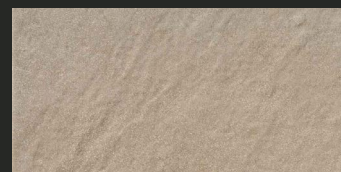
PERLA



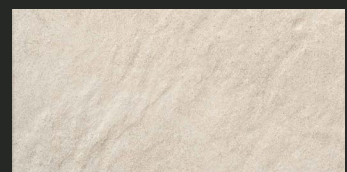
PERLA DECOR



MARENGO



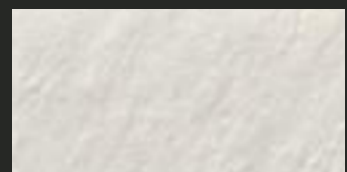
TAUPE



MARFIL



MARFIL DECOR



BLANCO



PENNY LANE

These red bodied ceramic wall tiles will add a rustic feel to any space. Our Penny Lane range includes a variety of plain and patterned matt tiles, with both warm natural tones and cooler modern greys. The eye-catching range includes perfectly co-ordinated geometric patterns which work brilliant with our selected plain tiles.

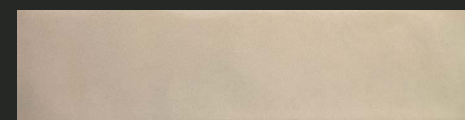
- Wall tiles
- Red body
- Matt finish
- Ceramic

LANDMADE

CERAMIC WALL TILES

MEASUREMENTS: 75 X 300MM / 2.9 X 11.8"

QUANTITY PER SQUARE METRE: 44.64



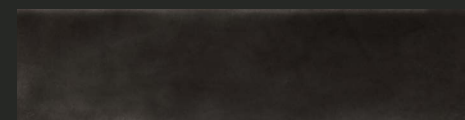
MARFIL



PETROLEO



TAUPE



NEGRO



MARENGO



BLANCO



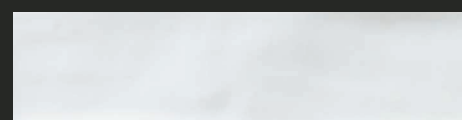
JADE



PERLA



GRIS



MATT BLANCO



LANDMADE

Add a contemporary finish with our Landmade range of wall tiles, featuring a ceramic white body. The range includes a variety of modern, complementary colours which are enhanced by a stylish gloss rippled finish. These tiles are ideal for almost any area and can be installed to create a variety of potential finishes.

- Wall tiles
- Rippled gloss finish
- White body
- Ceramic

VERVE

MATT CERAMIC WALL TILES

MEASUREMENTS: 250 X 700MM / 10 X 27.3"

QUANTITY PER SQUARE METRE: 5.70



BLANCO PLAIN



BLANCO DECOR



MARFIL PLAIN



MARFIL DECOR



VERVE

The Verve range of tiles are available in both warm and cool tones, with a matt finish designed to create a stylish effect in any room. The tiles are manufactured from a high-quality red bodied ceramic and feature a textured appearance. These complementary tiles can be combined to create a stunning focal point within any indoor space.

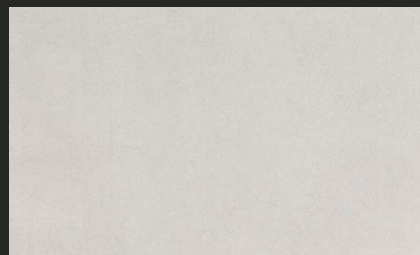
- Wall tiles
- Red body
- Matt finish
- Ceramic

DAKOTA

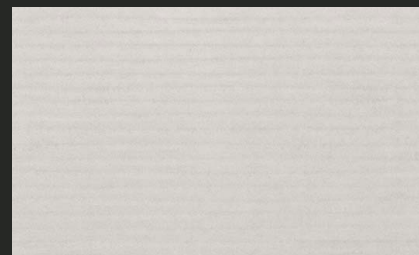
RED BODY CERAMIC TILES

MEASUREMENTS: 335 X 550MM / 13 X 21.5"

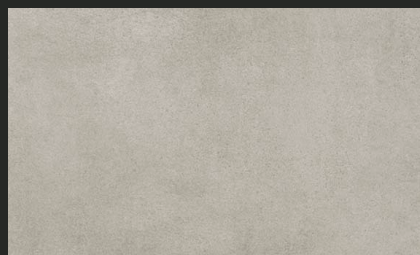
QUANTITY PER SQUARE METRE: 5.43



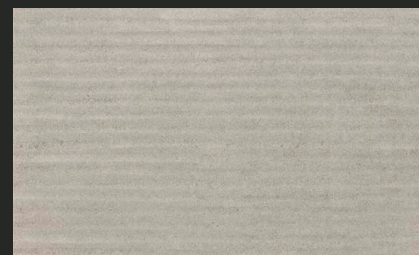
BLANCO PLAIN



BLANCO DECOR



GRIS PLAIN



GRIS DECOR



DAKOTA

The Dakota range of tiles are offered in a popular format size, with a soft matt finish. These red bodied ceramic wall tiles are ideal for creating a premium finish. Available in a range of shades and finishes, these tiles are particularly suited to modern bathrooms, although they could be used in any room.

- Wall tiles
- Red body
- Matt finish
- Ceramic

WATERLOO SUNSET

PATTERNED FLOOR TILES

MEASUREMENTS: 450 X 450MM / 17.7 X 17.7"

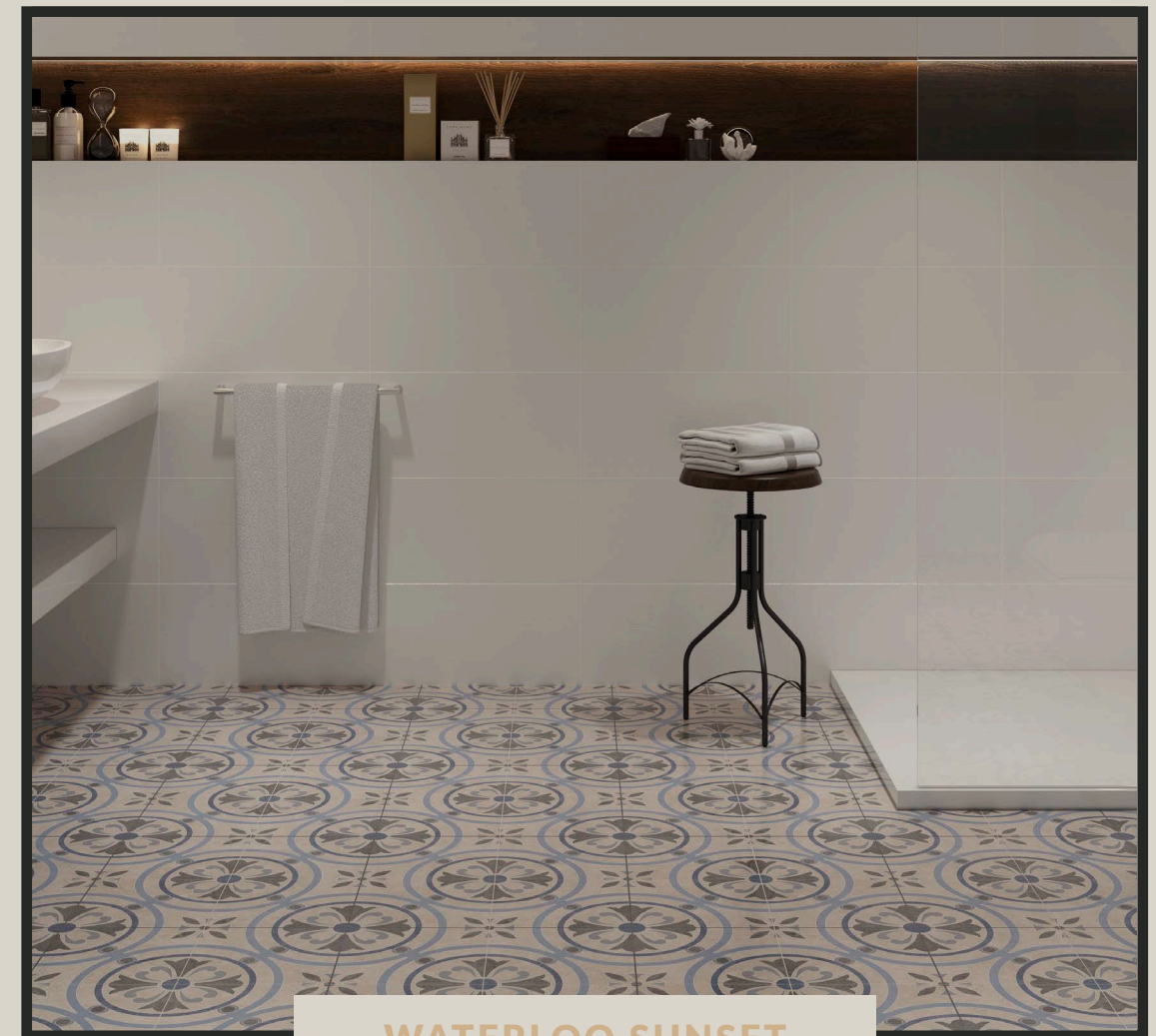
QUANTITY PER SQUARE METRE: 4.93



GREY



BLUE



WATERLOO SUNSET

Our Waterloo Sunset range of patterned wall and floor tiles are designed to create a unique focal point. These fashionable tiles are available with blue or grey tones and offer a matt finish and high-quality red ceramic body. These tiles are ideal for bathrooms and kitchens, although the decorative style will create a statement finish for any tiled floor or wall.

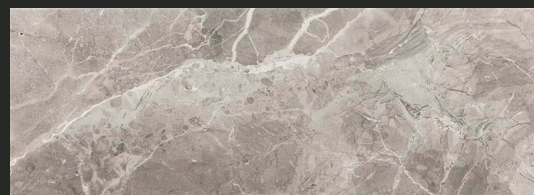
- Wall and floor tiles
- Matt finish
- Red body
- Ceramic

MOTOWN

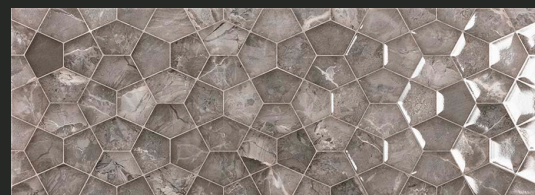
GLOSS WALL TILES

MEASUREMENTS: 250 X 700MM / 10" X 27.3"

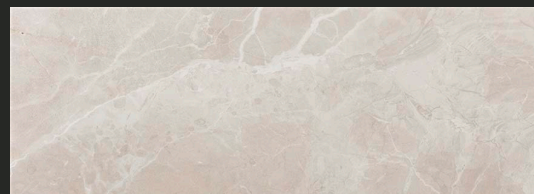
QUANTITY PER SQUARE METRE: 5.7



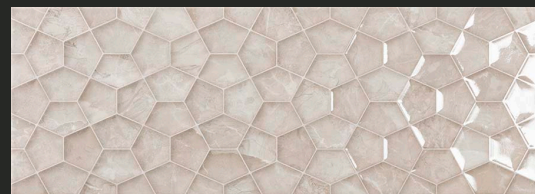
GRAPHITE PLAIN



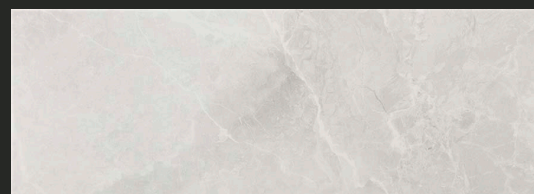
GRAPHITE DECOR



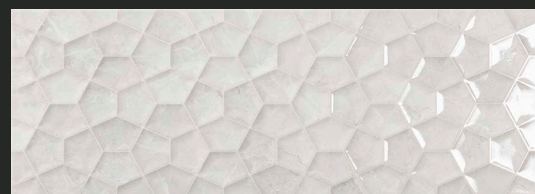
STONE PLAIN



STONE DECOR



WHITE PLAIN



WHITE DECOR



MOTOWN

The Motown range of ceramic wall tiles feature a stylish gloss finish, with a variety of elegant colours and patterns available. Choose from stone, graphite and white effect marble, with matching ripple effect tiles available to create a perfect finish in a modern bathroom or kitchen.

- Wall tiles
- Red body
- Gloss finish
- Ceramic

WELLER

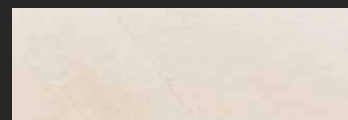
WHITE BODIED TILES

MEASUREMENTS: 300 X 900 MM / 12 X 35"

3.7 PER SQUARE METRE



BLANCO PLAIN



MARFIL PLAIN



PERLA PLAIN



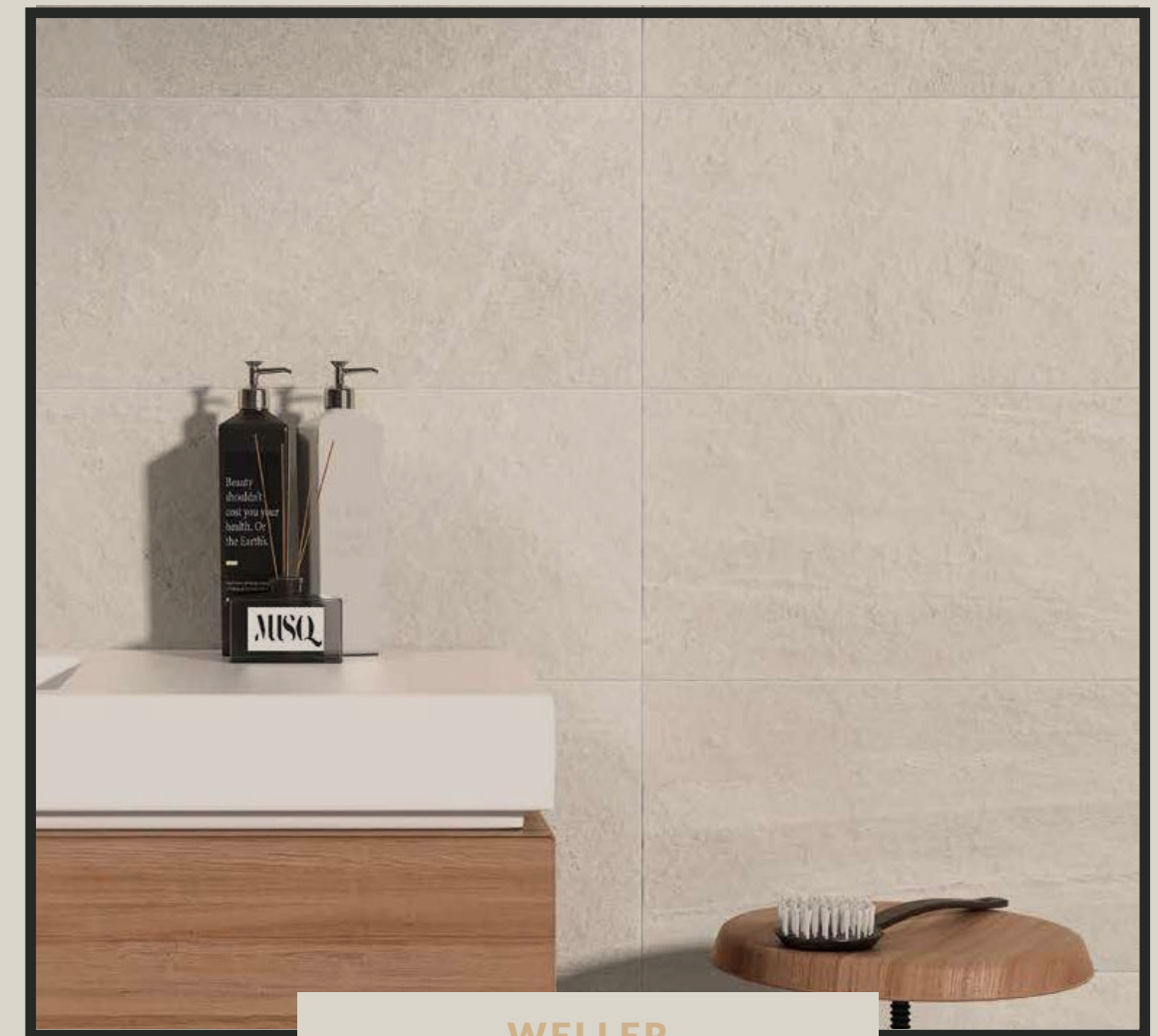
BLANCO DECOR



MARFIL DECOR



PERLA DECOR



WELLER

The Weller range of tiles are designed for use on walls, with a range of subtle colours and finishes chosen for their timeless look. These rectified tiles have a matt finish, with a white body which lies between porcelain and ceramic. The lack of colour in the body provides the lighter glaze colours with excellent definition, however they are not as hard as porcelain tiles.

We also have the following sizes of this range available, with a porcelain finish; 300x600mm, 600x600mm and 1200x600mm.

DELIVERY INFORMATION

FAST AND RELIABLE

IF YOU ARE A STOCKIST OF
TILES IN THE UK OR
IRELAND, WE WOULD LIKE
TO PARTNER WITH YOU

We operate on a trade only basis through our network of retailers, wholesalers and builders' merchants throughout the UK and Ireland. If you would like to stock our ranges or would like to find your nearest supplier, please contact the team at

sales@navarrotiles.com.

All orders placed before 12.00pm will be dispatched with our courier for next day delivery. This means you benefit from a comprehensive, reliable and timetabled courier service. The delivery will be fully traceable via the latest computer technology. The service is all part of our commitment to providing unique products throughout the UK and Ireland.

We offer free of charge deliveries on all orders over £100 excluding VAT.

For orders under £100 excluding VAT:

Tiles and palletised orders cost £25 excluding VAT

Accessories and items delivered via courier cost £8.00 excluding VAT.

Full Terms and Conditions are available to view via our website:

www.navarrotiles.com/termsandconditions

USEFUL INFORMATION

In bathrooms, wetrooms and shower areas it is important that tiles are installed onto a water-resistant surface. This can be achieved using tile backer boards and a Category C2 tile adhesive, with waterproof tanking kits available to waterproof plasterboard or plastered surfaces. The background should be carefully prepared to ensure it is clean, dry and able to support the weight of the tiles before installation begins.

If large format tiles are installed it is important to ensure the surface is flat before installing tiles, as tolerances are based on the size of the tile. During installation a Class 2 plus F,T, E, S1 or S2 adhesive needs to be used and should cover 100% of the tile, with buttering as the tiles are fixed in place. Although, there are some instances where large format tiles are not suitable, such as fixing in a brick bond style pattern.

There are a variety of thin tiles available which range from 3mm to 5.5mm in thickness, which are developed to meet all relevant technical standards. However, we always advise seeking further advice from the tile adhesive manufacturer or supplier before installing thin tiles.

ENDLESS LUXURY

SALES@NAVARROTILES.COM

WWW.NAVARROTILES.COM